



GAT MONTHLY MEMBERSHIP PROGRESS REPORT

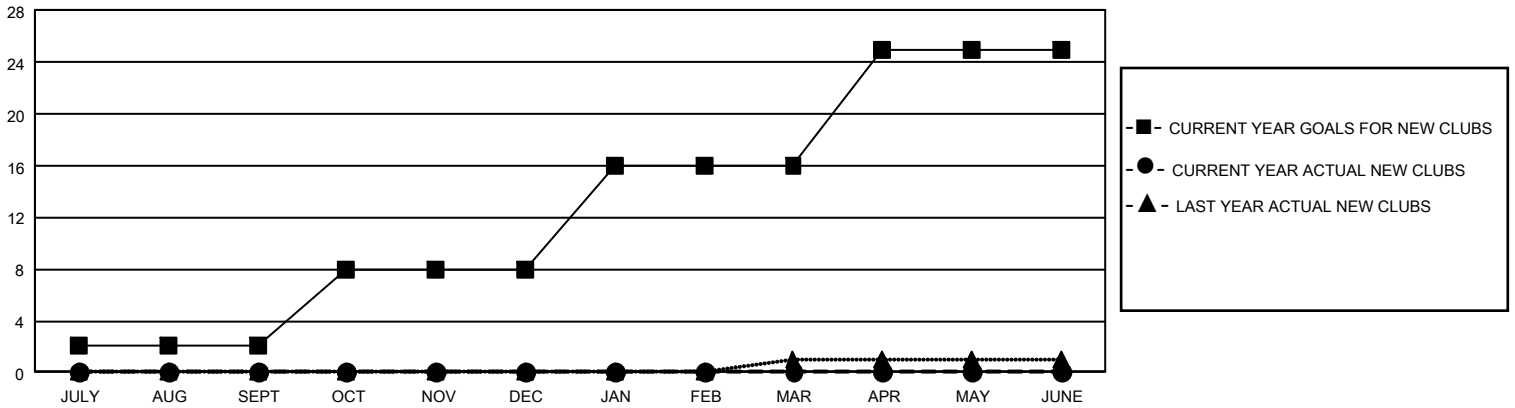
Results as of: 4/30/2021

GMT Constitutional Area 1, Group J

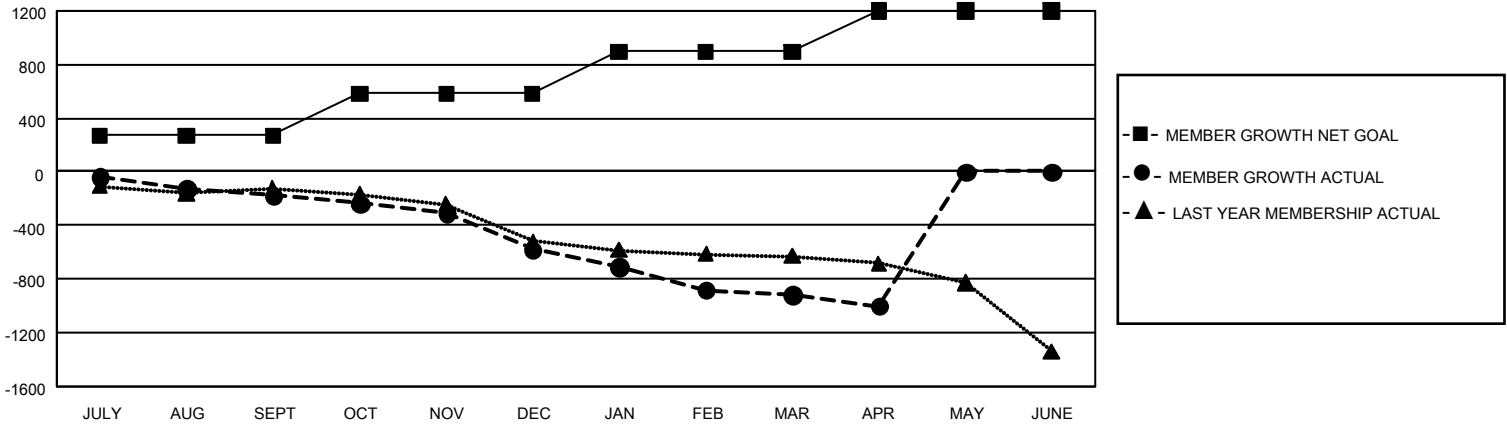
REPORT DOES NOT INCLUDE CLUBS IN UNDISTRICTED AREAS.

| Clubs | | | | Members | | | |
|-----------------------|---------------|-----------|---------------|-----------------------|------------------------|----------------------|--|
| RESULTS FOR 2020-2021 | | | | RESULTS FOR 2020-2021 | | | |
| QUARTER | NEW CLUB GOAL | NEW CLUBS | DROPPED CLUBS | QUARTER | MEMBER GROWTH NET GOAL | MEMBER GROWTH ACTUAL | DROPPED MEMBERS ACTUAL (including transfers) |
| JULY/AUG/SEPT | 6 | 0 | 3 | JULY/AUG/SEPT | 270 | 378 | 506 |
| OCT/NOV/DEC | 18 | 0 | 4 | OCT/NOV/DEC | 314 | 281 | 656 |
| JAN/FEB/MAR | 24 | 0 | 12 | JAN/FEB/MAR | 311 | 299 | 602 |
| APR/MAY/JUNE | 27 | 0 | 0 | APR/MAY/JUNE | 302 | 123 | 197 |

GOALS AND ACTUAL NEW CLUBS CUMULATIVE



GOALS AND ACTUAL MEMBERS CUMULATIVE



| | | | |
|---|--|---------------------------------|-----------------|
| DROPPED CLUBS: 19 | 373 CLUBS OF 952 ADDED 1 OR MORE NEW MEMBERS | <u>GENDER DISTRIBUTION</u> | |
| <u>DROPPED MEMBERS</u> | | MALE | 15,455 (71.23%) |
| DECEASED | 380 | FEMALE | 6,241 (28.77%) |
| CLUB CANCELLED | 118 | TOTAL FAMILY UNIT MEMBERS 4,216 | |
| OTHER | 1,463 | | |
| TOTAL | 1,961 | | |
| CLICK HERE FOR CUMULATIVE MEMBERSHIP DATA | | | |
| | | | |